

# **RegioWIN – Interregional Competition as a means of successfully involving regional stakeholders in Smart Specialisation and bottom-up approach for ITI**



1. Rationale behind RegioWIN
2. The RegioWIN Instrument
3. Outcome of the Competition - a Success
4. Really a Success - Target Conflicts

presented by  
**Magdalene Häberle**  
Head of Division ERDF Governance



**Baden-Württemberg**

MINISTRY OF ECONOMIC AFFAIRS, LABOUR AND HOUSING

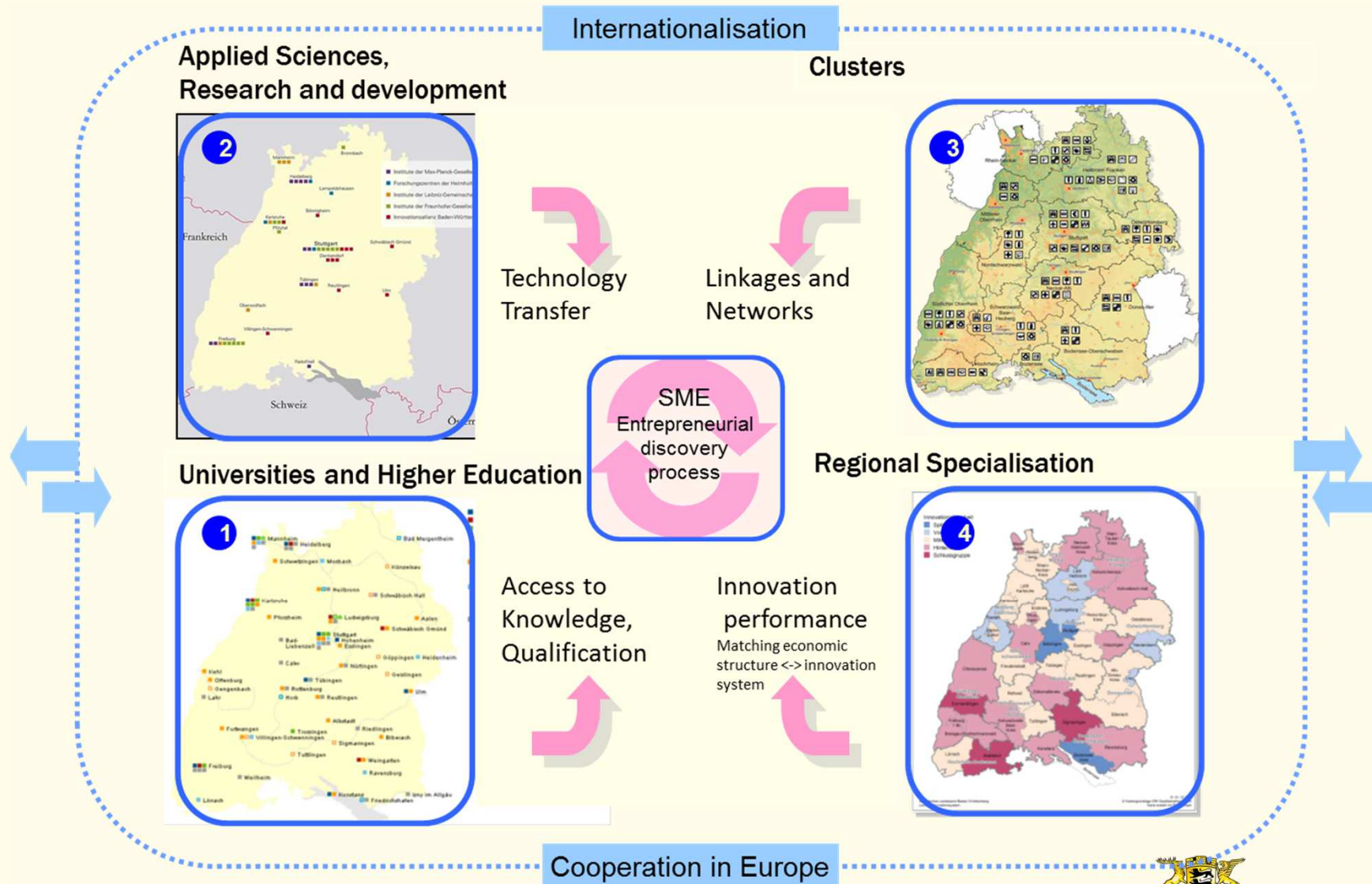
# Baden-Württemberg - Facts and Figures



- One of 16 States of the Federal Republic of Germany
- 10,8 Mio Inhabitants
- 35 km<sup>2</sup>
- Annual State Budget 44 bn Euro
- GDP 446 bn Euro
- R&D Investment 4,8 % of GDP, thereof 80 % private investment
- ERDF 2014-2020 budget: 246 Mio Euro



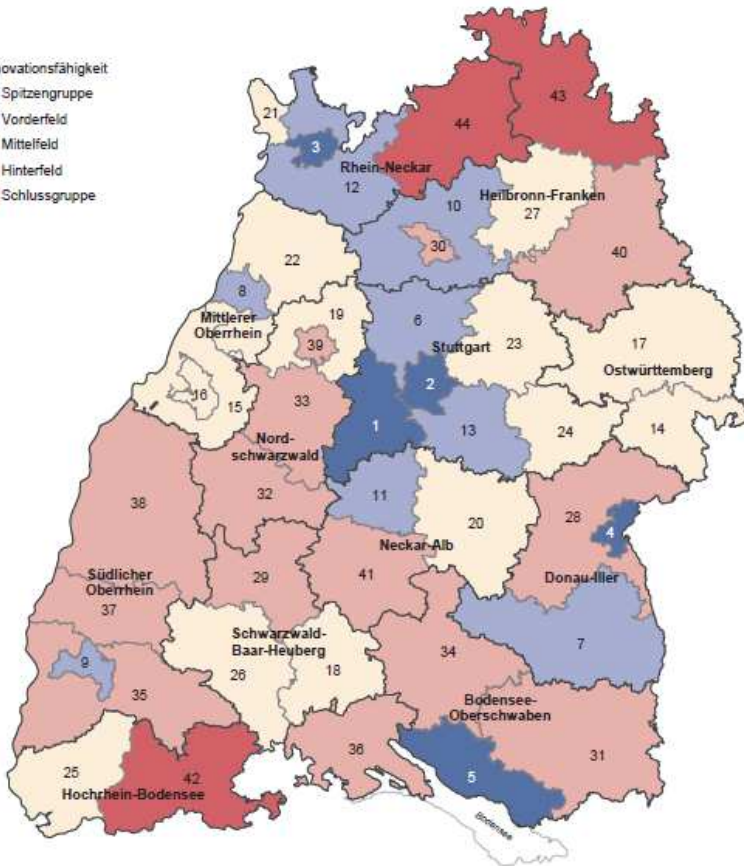
# Mayor Focus Areas of Innovation Strategy





Innovationsfähigkeit

■ Spitzengruppe  
 ■ Vorderfeld  
 ■ Mittelfeld  
 ■ Hinterfeld  
 ■ Schlussgruppe



Rang	Wert	Stadt- bzw. Landkreis	Rang	Wert	Stadt- bzw. Landkreis	Rang	Wert	Stadt- bzw. Landkreis
1	87,2	Böblingen, (LKR)	14	39,0	Heidenheim, (LKR)	28	29,6	Alb-Donau-Kreis, (LKR)
2	81,1	Stuttgart, (SKR)	15	38,8	Rastatt, (LKR)	29	27,6	Rottweil, (LKR)
3	67,8	Heilbronn, (SKR)	16	38,0	Baden-Baden, (SKR)	30	26,8	Heilbronn, (SKR)
4	66,2	Ulm, (SKR)	17	37,7	Ostalbkreis, (LKR)	31	26,6	Ravensburg, (LKR)
5	61,7	Bodenseekreis, (LKR)	18	37,4	Tübingen, (LKR)	32	26,6	Freudenstadt, (LKR)
6	48,3	Ludwigsburg, (LKR)	19	37,2	Enzkreis, (LKR)	33	26,3	Cairn, (LKR)
7	48,3	Biberach, (LKR)	20	36,8	Reutlingen, (LKR)	34	26,6	Sigmaringen, (LKR)
8	48,3	Karlsruhe, (SKR)	21	36,6	Mannheim, (SKR)	35	26,4	Breisgau-Hochschwarzwald, (LKR)
9	42,9	Freiburg, (SKR)	22	36,2	Karlsruhe, (LKR)	36	26,0	Konstanz, (LKR)
10	41,8	Heilbronn, (LKR)	23	34,6	Reims-Münch-Kreis, (LKR)	37	24,8	Emmendingen, (LKR)
11	41,7	Tübingen, (LKR)	24	33,3	Göppingen, (LKR)	38	24,3	Orientalkreis, (LKR)
12	41,6	Rhein-Neckar-Kreis, (LKR)	25	32,9	Lörrach, (LKR)	39	23,2	Pfaffingen, (SKR)
13	41,2	Esslingen, (LKR)	26	32,2	Schwarzwald-Baar-Kreis, (LKR)	40	22,8	Schmidtsch Hall, (LKR)
			27	30,8	Hohenlohekreis, (LKR)	41	22,4	Zollernalbkreis, (LKR)
						42	20,6	Waldshut, (LKR)
						43	20,3	Münch-Tauben-Kreis, (LKR)
						44	19,9	Neckar-Odenwald-Kreis, (LKR)

© Statistisches Landesamt Baden-Württemberg  
 Landesinformationssystem

31-21-14-23M  
 © Fachgrundlagen des Geo- und Kartennetzes  
 Karte erstellt mit RegioGraph

Rationale behind RegioWIN (4)

## Innovation Index - Analysis at NUTS III level

- significant differences in innovative power at sub-regional level
- varying regional challenges in relation to
  - economic structure,
  - topography,
  - demographics

How to support sub-regional level in innovation policy?

How to transfer the RIS3 idea to sub-regional level?



Baden-Württemberg

MINISTRY OF ECONOMIC AFFAIRS, LABOUR AND HOUSING



Rationale behind RegioWIN (5)

# Involving stakeholders at sub-regional level



## **Not a funding programme,** but an **interregional competition**

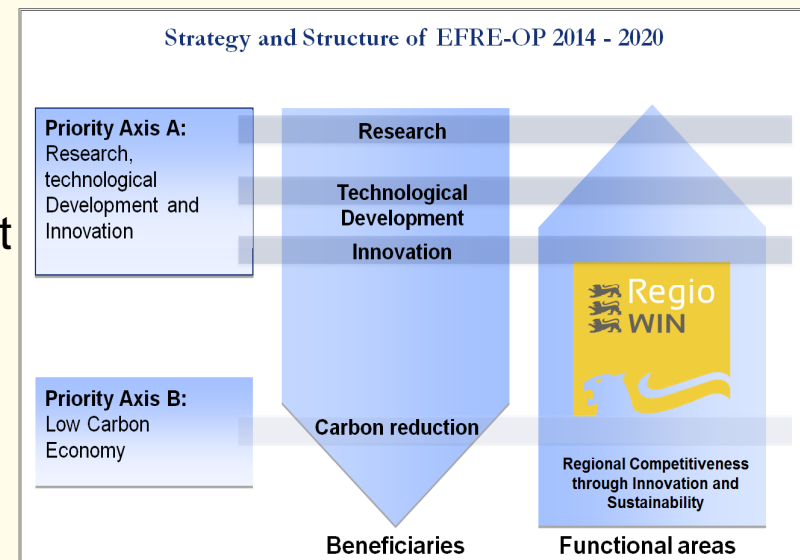
- based on Smart Specialisation
- addressing the five central challenges
- create best ideas in terms of regional development

## **Goal**

- Support cities and regions to enhance their competitiveness
- Involve stakeholders in strategy development as base for future regional development
- Regional Ownership of strategy and project implementation

## **Input**

- Joint effort of three BW ministries
- Full coverage of ERDF Programme range
- Long range preparation





Baden-Württemberg

MINISTRY OF ECONOMIC AFFAIRS, LABOUR AND HOUSING



1. Jury: Selection of 11 promising Concepts chosen for further Development



2. Jury: - Selection of awarded Regional Development Strategies  
 - Selection of  Lighthouse Projects for ERDF-Funding  
 - Recommendations concerning other  Key Projects for possible Funding through other Programmes

3. Application for ERDF-Funding for awarded Lighthouse Projects

Phase 1

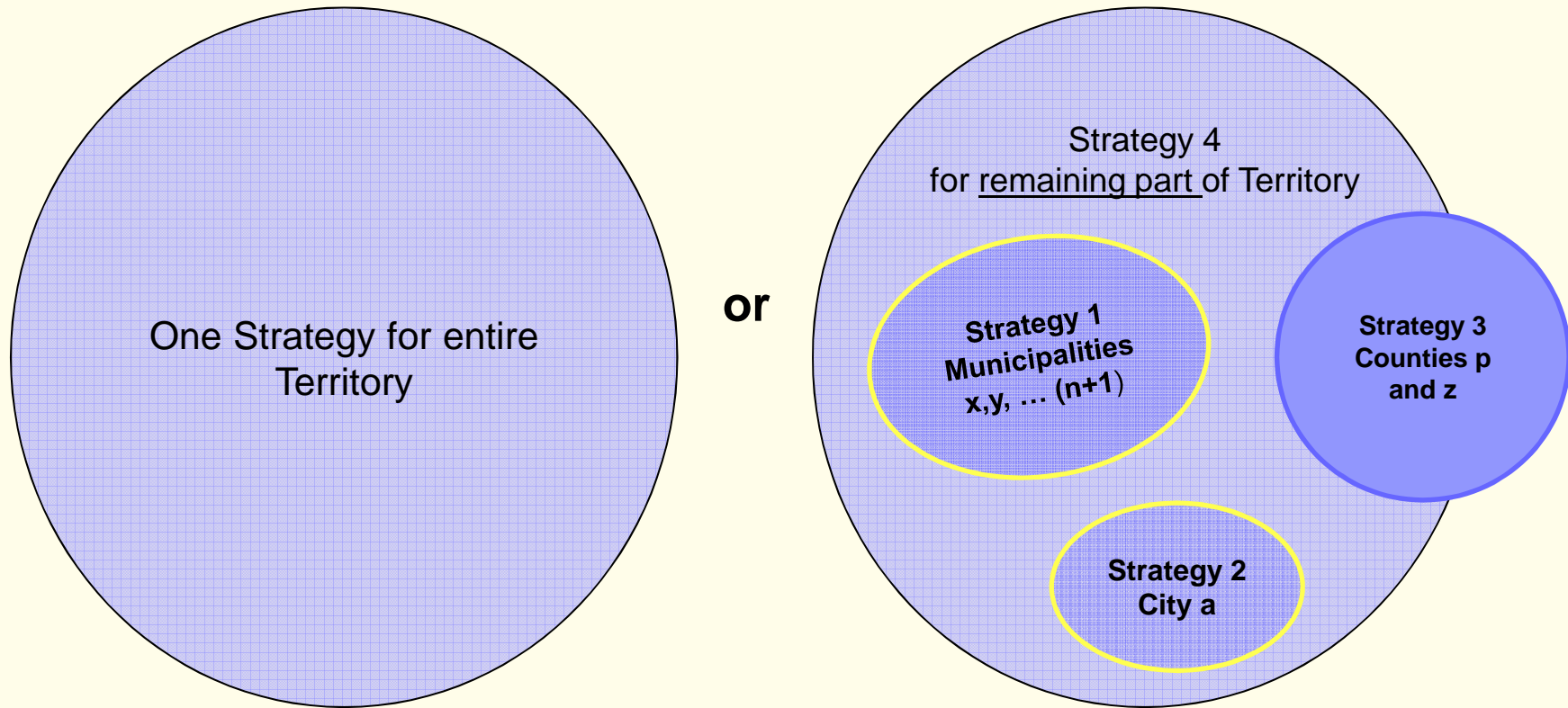
Phase 2

Competition

**Implementation**

<http://regiowin.eu/> & [www.efre-bw.de](http://www.efre-bw.de)

# The Single-Spatial-Strategy Principle





# Phase 1

- Full coverage of BW with sub-regional strategy development
- more than 1500 stakeholders involved
- freedom of territorial choice leads to new alliances



Entries in Phase 1



Entries prompted to Phase 2

- 11 out of 14 Regional Strategy Concepts prompted to Phase 2
- RIS3 easier to apply to smaller and homogeneous regions than to large regions









Outcome of RegioWIN (2)

## Phase 2

- Additional stakeholders involved
- all 11 Regional Development Strategies were awarded **WINregion** Label
- 21  - Lighthouse projects qualified for ERDF funding
- all contesting regions follow-up Strategic processes on their own accord
- **RegioWIN** Network established
-  established as label in connection with unusually good press coverage for ERDF funded activities






Sevilla, 28.-30. September 2016, Slide 10

Outcome of RegioWIN (3)

## Phase 2

- 21  - Lighthouse projects covering full range of BW ERDF-OP translate into
- 34 ERDF funded projects using 7 different measure types
- Increase of regional influence on location decisions



wirtschaftsnahe Forschungsinfrastruktur



Regionales Innovationszentrum



Innovationsinfrastruktur



Clustermanagements (incl. Holz)



Technologietransfer



Verbundforschung




KmS Bewusstseinsbildung



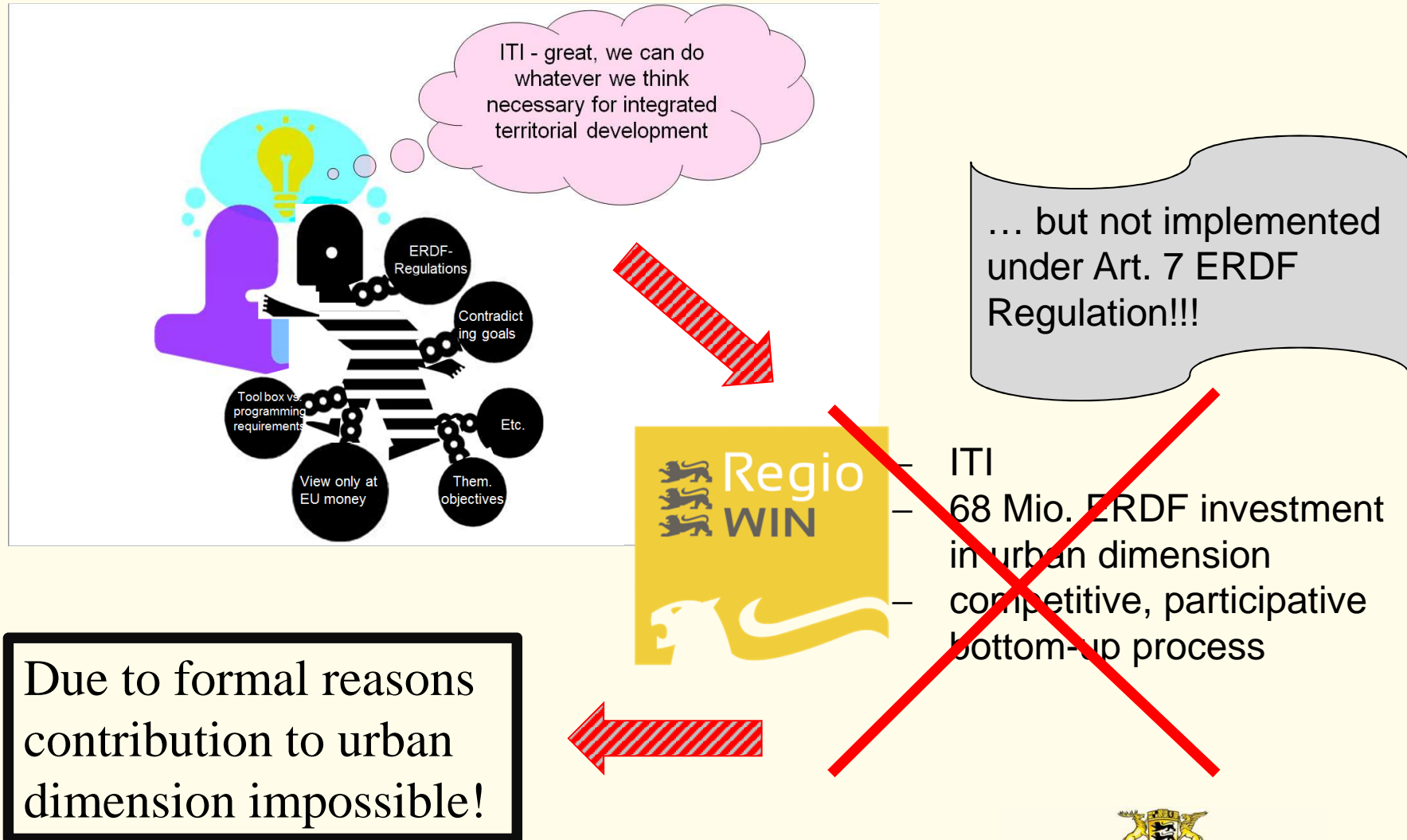
Baden-Württemberg

MINISTRY OF ECONOMIC AFFAIRS, LABOUR AND HOUSING

# Summary

- Smart Specialisation idea successfully transferred to sub-regional level
- Competition successful to start bottom-up processes and to involve a huge number of regional stakeholders in strategic regional development
- Principle of single-spatiality results in shaping strategic communities based on existing regional interconnections
- Follow-up of strategic processes in all contesting regions on their own accord regardless of an award
- Lighthouse projects cover full range of ERDF-OP opportunities
- Increase of regional influence on location decisions through prioritisation of Lighthouse projects
-  established as brand for regional development policies
-  resulted in unusually good press coverage for ERDF funded activities
- Regio**WIN** Network established (bi-annual meetings) as networking platform and mouthpiece for functional areas in terms of regional policy

# Target conflicts between ITI-Idea and Funds Programming and MCS Requirements





# Thank you for your kind attention!

Magdalene Häberle

contact: [magdalene.haeberle@wm.bwl.de](mailto:magdalene.haeberle@wm.bwl.de)

<http://wm.baden-wuerttemberg.de/de/wirtschaft/wirtschaftsfoerderung/foerderpolitik-der-eu/europaeischer-fonds-fuer-regionale-entwicklung-rwb-efre/>

[www.efre-bw.de](http://www.efre-bw.de)

[www.regiowin.eu](http://www.regiowin.eu)

